



Established in 1930, Industrial Clutch designs and manufactures a complete line of dry and oil-immersed clutches and brakes ranging in size from 8 in. to over 40 in. diameter with torque capacities exceeding 4,000,000 lb.in.

**Customer Service & Application Support**  
1-262-547-3357

[www.indclutch.com](http://www.indclutch.com)  
[www.wichitaclutch.com](http://www.wichitaclutch.com)

P-1723-7-IC 7/15  
Printed in USA



#### LKB Brakes

These low inertia spring set, air release motor brakes feature a high torque, low energy design, provide quick, smooth stopping and are ideal for failsafe protection of process equipment. Rugged design and large thermal load dissipation make these units very popular in the mining industry.



#### LK Series Clutches

These low inertia air set clutches are ideal for use in marine, mining and metal forming industries.



#### LKT Clutches

The LKT clutch incorporates an extremely low driven inertia and the quickest response with minimal air consumption of any clutch or brake available. It is an ideal choice for metalforming or indexing applications.



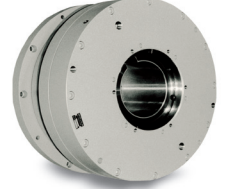
#### HC Clutches

The Model HC clutches are designed to be used in either an end of shaft or through shaft mounting configuration. Their compact size makes these units ideal for incorporating within a gear housing. Multiple speed transmissions use a variety of these units to effect fixed mesh speed changes or they may be used as a stand alone device for disconnect service.



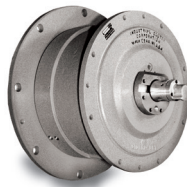
#### LKM Clutches

LKM series clutches feature a self-adjusting separating system for wear and no adjustments are ever required by the user during regular use or during routine maintenance. No plate contact can occur with this unique positive brake separation system and the many advantages of the disc clutch can be fully realized for marine applications.



#### HBA/HBS Brakes

The Model HBA brake is an oil immersed, air or hydraulically set brake designed to be mounted on a drive train shaft extension. The Model HBS brake is identical to the Model HBA brake except the unit is designed to be spring-set and hydraulically or pneumatically released.



#### CBH Series Clutch/Brakes

The Model CBH combination clutch-brakes are oil immersed units with a spring-set brake and hydraulically-set clutch. They are designed for extremely high cyclic rates for those applications that require a high degree of stopping accuracy.



#### CBA Series Clutch/Brakes

The Model CBA combination clutch-brake is an oil immersed unit utilizing a self-contained cooling oil-pumping system and capable of being actuated with either air or hydraulic pressure.